



# TRAXXAS<sup>®</sup>

***The Fastest Name In Radio Control<sup>®</sup>***



## ***FUN STARTS HERE***



# NEW FROM TRAXXAS



## XRT™

**RACE-INSPIRED ENGINEERING  
EXTREME 8S POWER AND SPEED  
X-TRUCK™ SIZE AND STRENGTH**



## TRX6

**ULTIMATE RC HAULER**

- Rear bed fits all 4-Tec models
- Adjustable wheel chocks and tie-down bands
- Installed Realistic LED lighting
- Factory-Installed Pro Scale Winch

'33 Hot Rod  
Model #93044-4  
Sold Separately

## 1/18 SCALE



## TRX4M

**BIG FUN AND ADVENTURE IN A  
SMALLER TRX-4**

- The Right Size for Fun
- All-Terrain Versatility
- Waterproof Electronics



## TRX4

**LIFTED OFF-ROAD  
ADVENTURE**

- TRX-4 High Trail Edition
- Extended 336mm Wheelbase
- Clipless Body Mounting
- Molded Scale Details



## XO-1

**THE WORLD'S FASTEST  
READY-TO-RACE® RC SUPERCAR**

- Stable Aerodynamics
- 100+MPH Top Speed
- Big Block Power



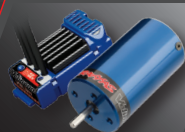


**WE SCALED DOWN EVERYTHING...  
EXCEPT THE POWER!**

# 1/16 E-REVO<sup>®</sup> VXL<sup>®</sup> BRUSHLESS

**50+<sup>+</sup> mph**

Extreme performance. Laser precision. The convention-busting inboard suspension of the 8-time National Champion Revo<sup>®</sup> and the engineering art of the E-Revo combine with state-of-the-art technology in a compact size that's perfect for any track, indoors or out.



**VELINEON BRUSHLESS  
POWER**



**SEALED DIFFERENTIALS**



**HEAVY DUTY  
TRANSMISSION**



**1/16 E-REVO<sup>®</sup>**



**1/16 SLASH<sup>®</sup> 4x4**



**1/16 SUMMIT<sup>®</sup>**

\*With series connector and additional NiMH battery (sold separately).

TRAXXAS.COM **3**



# ***THE #1 CHOICE FOR READY-TO-RACE® FUN!***

Reliable, Traxxas-tough, and loaded with performance, the Bandit, Rustler, Bigfoot and Stampede models open the door to affordable fun for everyone to enjoy. With factory-installed LED lighting, wheelie-popping power, legendary Traxxas-tough durability, and a 30+mph\* top speed, full-throttle fun is just a trigger pull away.



## ***RUSTLER®***

- Front and rear LED lighting
- TQ 2.4GHz Radio System
- XL-5 Waterproof Electronic Speed Control
- Titan® 12-Turn 550 Motor
- Brushless-Ready Transmission



## ***BANDIT***

- Front and rear LED lighting
- 35+mph top speed
- New ProGraphix paint
- Includes 7-Cell NiMH Battery with iD and 4-amp DC Peak Detecting Fast Charger





**LED** FACTORY-INSTALLED  
**LIGHTING**

**30+<sup>+</sup> mph**

- Front and rear LED lighting
- Titan® 12-Turn 550 Modified Motor
- XL-5 Waterproof Electronic Speed Control
- Includes 7-Cell NiMH Battery with iD and 4-amp DC peak Detecting Fast Charger

**BIGFOOT®**



Ford Motor Company Trademarks and Trade Dress used under license to Traxxas.  
All other copyrights or trademarks are the property of their respective owners and are being used under license.





70+<sup>\*</sup> mph HAS



**RUSTLER**  
**VXL**  
BRUSHLESS



6 1.888.TRAXXAS

**TSM**  
TRAXXAS STABILITY MANAGEMENT



# EXTREME BRUSHLESS POWER

Setting the benchmark for power and durability, Stampede delivers wheelies on demand and 65+mph\* speeds. Rustler and Bandit turn it up even more with speeds beyond 70mph\*.

Traxxas Stability Management and the new Magnum 272R Transmission harness all that power for even more fun! Velineon brushless power delivers pure, high-performance excitement straight out of the box.

**NEW**  
PRO SERIES  
**MAGNUM**  
272R



**65+<sup>\*</sup>**  
mph



**STAMPEDE**  
VXL  
BRUSHLESS

- NEW Magnum 272R Transmission
- Velineon Brushless Power System
- Traxxas Stability Management (TSM)™
- Waterproof Electronics

**70+<sup>\*</sup>**  
mph



**BANDIT**  
VXL  
BRUSHLESS

- NEW ProGraphix Paint
- TQi 2.4GHz Radio System
- Select Your Speed and Runtime with a Genuine Traxxas Battery

\*With 3s LiPo battery pack and optional gearing (sold separately.)

TRAXXAS.COM 7



**65+<sup>\*</sup>  
mph**

**THE STADIUM  
TRUCK REDEFINED**

**RUSTLER 4x4 VXL**  
BRUSHLESS



**TSM**  
TRAXXAS STABILITY MANAGEMENT



**CLIPLESS BODY MOUNTING**



**SELF-RIGHTING**  
PATENTED SELF-RIGHTING FEATURES



**LOW-CG CHASSIS**

**8** 1.888.TRAXXAS

\*With optional 3s LiPo battery and speed pinion (sold separately)





# RUSTLER 4x4

- Titan<sup>®</sup> 12-Turn 550 modified motor
- XL-5 electronic speed control



FACTORY-INSTALLED  
**LED LIGHTING**



TRAXXAS.COM 9





# ***THE WORLD'S BEST SELLING READY-TO-RACE® SHORT COURSE TRUCKS***

When it comes to pure off-road fun, the Slash family of short course trucks delivers in a big way. Rugged, Traxxas-tough construction, maximum performance, and reliable all-day fun put Slash in a league of its own.

## ***SLASH***



### ***SLASH***

- Titan® 12-Turn 550 Motor
- XL-5 Electronic Speed Control
- Battery and charger sold separately.



### ***SLASH***

- Titan® 12-Turn 550 Motor
- XL-5 Electronic Speed Control
- Front and rear LED lighting
- Traxxas Power Cell NiMH Battery with iD



UP TO  
**60+<sup>\*</sup>mph**

**RAPTOR**

**60+MPH\* VELINEON BRUSHLESS SPEED**



**FOX RAPTOR**

- Officially Licensed Ford F-150 Raptor Replica Body
- 4-amp DC Peak Detecting Fast Charger
- Traxxas Power Cell NiMH Battery with iD
- Sealed Waterproof Electronics



**SLASH VXL**

- Traxxas Stability Management (TSM)™
- Velineon Brushless Power System
- Equipped with Magnum 272R Transmission
- Speeds over 60mph with Optional 3s LiPo Battery

\* With 3s LiPo and optional gearing (not included)

TRAXXAS.COM 11



# FOUR-WHEEL DRIVE POWERHOUSE

The Traxxas Slash defines the short course truck segment and sets the standard for durability, performance, and technology. Innovative features combine with high-flying fender-to-fender action taken straight from full-size race trucks to make Slash the #1 choice in Ready-to-Race short course trucks.



## SLASH 4x4



### SLASH 4X4 ULTIMATE

- Traxxas Stability Management
- High-Capacity GTR Shocks
- Premium Anodized Aluminum Accessories
- TQi Radio System with Traxxas Link Wireless Module
- Factory Installed Telemetry Sensors
- Low-CG Chassis

12 1.888.TRAXXAS



### SLASH 4X4 VXL

- RC Car Action - Best Electric Truck
- Speeds over 60mph with Optional 3s LiPo Battery
- Velineon Brushless Power System
- Traxxas Stability Management (TSM)™
- TQi Radio System





## SLASH<sup>®</sup> 4x4



- Powerful XL-5 Waterproof Electronic Speed Control
- Titan<sup>®</sup> 12-Turn 550 Motor
- 4X4 Traction and Stability
- Brushless-Ready Drivetrain
- Front and rear LED lighting

**LED** FACTORY-INSTALLED LIGHTING

## STAMPEDE<sup>®</sup> 4x4



- Powerful XL-5 Waterproof Electronic Speed Control
- Brushless-Ready Drivetrain
- Traxxas Power Cell 7-Cell NiMH Battery with iD
- 4-amp DC Peak Detecting Fast Charger
- Front and rear LED lighting

**LED** FACTORY-INSTALLED LIGHTING

\*With optional 3s LiPo batteries and speed gearing (sold separately)

TRAXXAS.COM 13





# HOSS<sup>®</sup> 4x4 VXL



14 1.888.TRAXXAS







### 540XL MOTOR

More wheelies, more torque, more speed. The Velineon 540XL brushless motor gives the Hoss more torque to weight for maximum wheels-up fun.



### EXTREME SLEDGEHAMMER GRIP

Hoss VXL 4x4 rides on huge Sledgehammer tires to put its massive torque to the ground. They're TSM-rated for speeds of 60mph and beyond!



### ROCK-SOLID DRIVETRAIN

A Torque-Biasing Center Drive outfitted with a steel spur gear, tough aluminum center driveshaft and beefed-up extreme-duty axles provide both efficiency and brute strength.

\*With optional 3s LiPo battery and speed pinion (sold separately)

TRAXXAS.COM 15





# XRT™

The Traxxas XRT fuses race-inspired design and engineering with X-Maxx® power and strength. The result is an all-new platform with sharp reflexes and unprecedented stability that is capable of exploiting the upper range of extreme 8s power and speed.

**8s** / **60+**  
30+ VOLTS / MPH\*

16 1.888.TRAXXAS





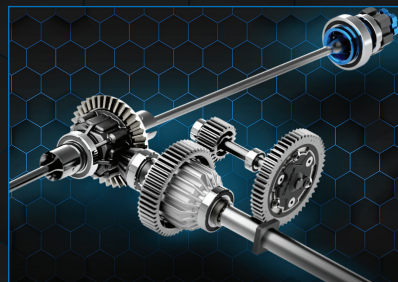
# ***RACE-INSPIRED ENGINEERING***



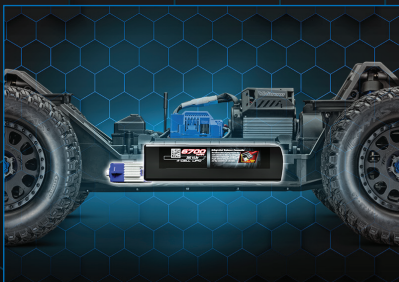
***BUILT FOR SPEED AND HANDLING***



***VXL-8S POWER SYSTEM***



***PROVEN TOUGH ALL-METAL DRIVELINE***



***RACE-INSPIRED LOW-CG CHASSIS***



***GRAVIX™ RACE TIRES***



***PATENT-PENDING CLIPLESS BODY***

\*60+ mph with Two 4s LiPo Batteries and Included Optional Speed Gears

TRAXXAS.COM 17





# X-MAXX<sup>®</sup>

Unrelenting 4X4 power, mammoth size, and award-winning innovation make X-Maxx the ultimate monster truck. With 30+ volts of extreme 8s power, X-Maxx defies physics, unleashing jaw-dropping acceleration and 50+mph speeds. Engineered to conquer the most extreme terrain and take brutal real-world punishment in stride, X-Maxx is the definition of Traxxas Tough™.

- Torque-Biasing Center Drive
- 30+ volts of extreme 8s power
- Self Righting
- Maxx Duty Drivetrain
- Dual-fan motor cooling
- Wheelie Bar



18 1.888.TRAXXAS







**8s**  
30+ VOLTS

**50+<sup>\*</sup>**  
**mph**



**UNLEASH 8s POWER**

\* Requires two 4s LiPo batteries (#2890X, sold separately) and included 46T optional spur gear.

TRAXXAS.COM 19





**REDEFINING 1/8  
SCALE OFF-ROAD**

# **SLEDGE**<sup>®</sup>



20 1.888.TRAXXAS





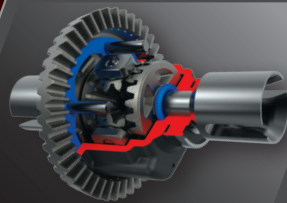
# 6s

## 22+ VOLTS

### 70+ mph

\*70+mph with two 3s LiPo batteries and optional gearing (sold separately).

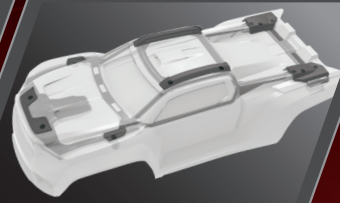
Engineered. Tested. Built to a higher standard. Sledge is made to exceed your expectations for quality, toughness, and fun. The rock-solid chassis, massive steel drivetrain, ferocious 6s power, and race-inspired handling leave everything else in the dust.



**ENGINEERED FOR 6s POWER**



**SUPERIOR CHASSIS STRENGTH**



**NEW CLIPLESS BODY**



**MONSTER SERVO**



**VXL-6s**  
POWER SYSTEM



**SLEDGEHAMMER TIRES**





# MAXX<sup>®</sup>

The Traxxas X-Maxx<sup>®</sup> is a giant that forever changed the face of RC monster trucks. The 1/10 Traxxas Maxx expertly packages X-Maxx's innovative design elements and jaw-dropping strength into a lighter, more compact, more ferocious beast. Now the newest Maxx is even bigger, with a longer wheelbase, beefier Sledgehammer tires, and that incredible WideMaxx stance for more intense action. Let the fun begin!

- WIDEMAXX<sup>®</sup> FROM THE START
- LONGER CHASSIS ACCEPTS 6700mAh 4-CELL LiPo
- SLEDGEHAMMER<sup>®</sup> TIRES
- SIX NEW COLORS



22 1.888.TRAXXAS





**4S**  
16+ VOLTS

**60+<sup>\*</sup>**  
**mph**



**EXPERIENCE MAXX POWER**

\*With optional LiPo batteries and speed gearing (sold separately)

TRAXXAS.COM 23





**BRONCO**



# ***BIG FUN AND ADVENTURE IN A SMALLER TRX-4***

Introducing TRX-4M, a new way to experience all the fun, adventure, and scale realism of the TRX-4 in a 1/18 platform. TRX-4M bridges the gap between the small crawler scene and 1/10 scale quality and performance. Oil-filled shocks, steel frame rails, and a smooth running drivetrain give it true outdoor capability over rocks and through grass and streams. The tight turning radius and precise throttle control give it fantastic indoor maneuverability.

## ***1/18 SCALE***



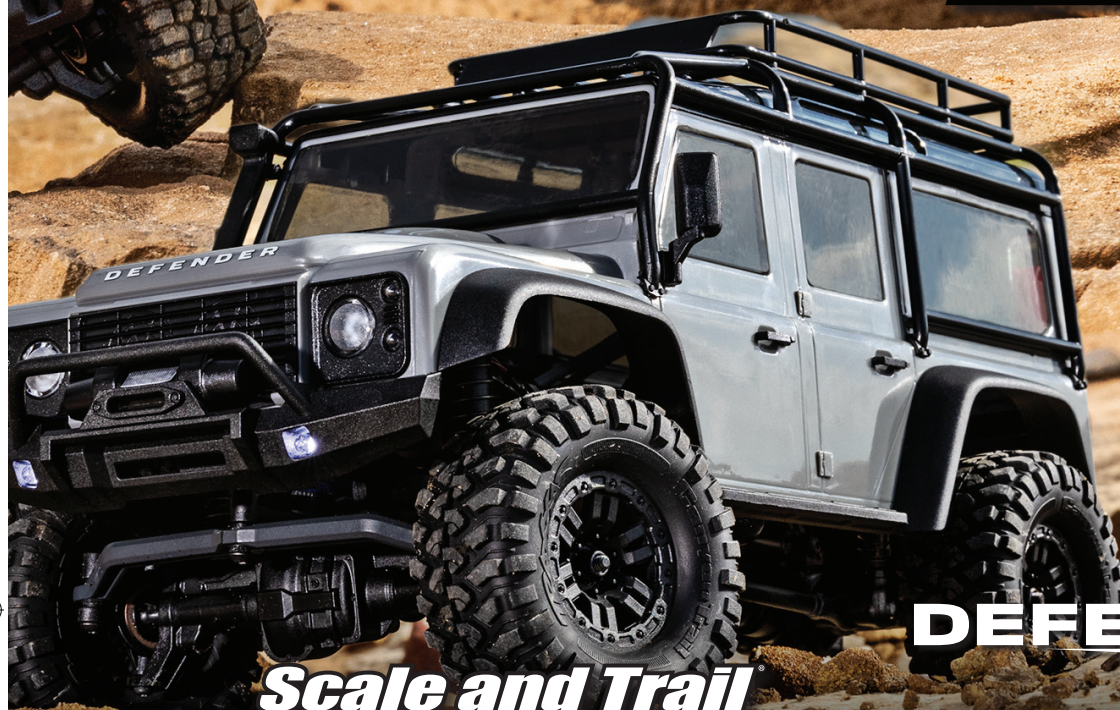
**24** 1.888.TRAXXAS







# TRX4<sup>M</sup>



**DEFENDER**

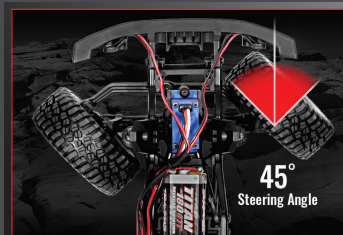
***Scale and Trail  
Crawler***



**THE RIGHT SIZE FOR FUN**



**ALL-TERRAIN VERSATILITY**



**45° STEERING ANGLE**



**OIL-FILLED GTM<sup>™</sup> SHOCKS**



**DETAILED ABS BODY WITH  
CLIPLESS MOUNTING**



**WATERPROOF ELECTRONICS**

TRAXXAS.COM 25





# THE **ULTIMATE** RC HAULER

4-Tec Models  
Sold Separately



Factory-Installed  
Pro Scale Winch

**TWENTY-FIVE FACTORY INSTALLED  
LED LIGHTS**

**HIGH/LOW RANGE  
TRANSMISSION**

**T-LOCK REMOTE LOCKING  
DIFFERENTIALS**

26 1.888.TRAXXAS



**TRX6**



## Mercedes-Benz G 63 AMG 6x6



**SUPERIOR 6x6 DESIGN**



**EXCEPTIONAL BODY DETAIL**



**FACTORY-EQUIPPED  
LED LIGHTING**

TRAXXAS.COM 27

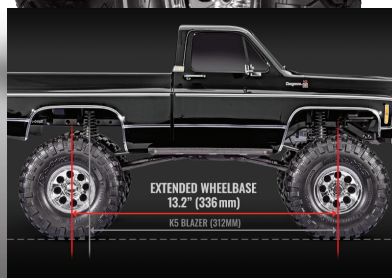




Traxxas elevates scale adventure with the lifted TRX-4® Chevrolet® K10 High Trail Edition. Thanks to its factory-installed Long Arm Lift Kit and oversize tires, the highly detailed K10 replica body stands over an inch taller than our standard TRX-4. The K10's extended wheelbase further enhances the TRX-4's already legendary off-road capability for even more fun on the trail.



**HIGH TRAIL EDITION**



**EXTENDED 336MM WHEELBASE**



**CLIPLESS BODY MOUNTING**

28 1.888.TRAXXAS





# TRX4<sup>®</sup>

## BRONCO



After 25 years, the Bronco returns as Ford's top-performing 4X4 and America's most sought-after SUV. Traxxas captures the eagerly-anticipated Bronco in exacting detail with all the capability and versatility of the award-winning TRX-4. The Traxxas Bronco combines Ford-approved realism and class-leading performance for exciting off-road adventure no matter where the trail takes you.

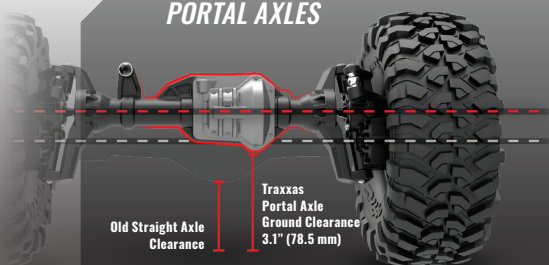


**BRONCO  
RANGER  
XLT**

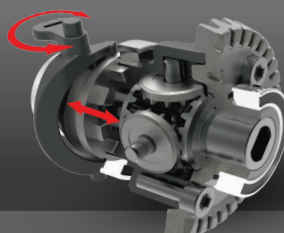
**DEFENDER**

**BLAZER**

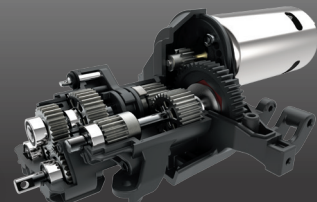
### PORTAL AXLES



### PATENTED T-LOCK REMOTE LOCKING DIFFERENTIALS



### HIGH/LOW RANGE TRANSMISSION



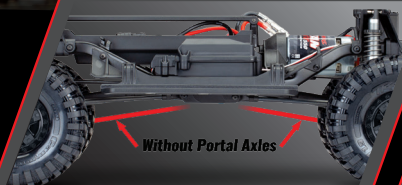
TRAXXAS.COM 29



# TRX4 SPORT

## PURPOSE BUILT

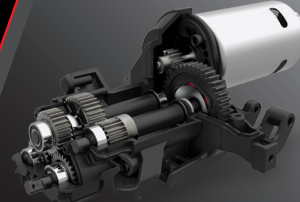
The TRX-4 Sport combines the unbeatable ground clearance and driving dynamics of Traxxas portal axles, sticky Canyon® Trail tires, and a lightweight pickup truck body for a leaner, performance-focused TRX-4.



RAISED CENTER DRIVESHAFTS  
AND SUSPENSION LINKS



FULL-TIME LOCKED  
DIFFERENTIALS



SINGLE-SPEED STEEL GEAR  
TRANSMISSION

### TRX4 EQUIPPED WITH TRAXX

Engineered for grip everywhere and ultimate off-road capability, the TRX-4 with All-Terrain Traxx is factory-equipped with powerful lighting and a full array of performance parts and scale detail accessories. It's the ultimate combo of scale and performance, and it's only from Traxxas.





# ENGINEERED TO WIN™

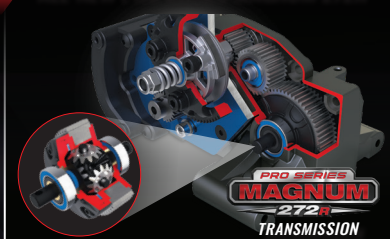


## GET STARTED RIGHT IN NO PREP DRAG RACING

Drag Slash has been engineered with thoughtful features and innovative performance to win at any level of skill and experience.

# DRAG SLASH™

### ALL-NEW PRO SERIES MAGNUM 272R™



### ULTIMATE TRACTION - PRECISION CONTROL



### TRAXXAS TRANS BRAKE



## 5.0 MUSTANG BODY FOR DRAG SLASH

# MUSTANG 5.0

- ✦ Officially licensed Ford Mustang body kit
- ✦ Available clear or pre-painted in Green, Blue, Black, and Red
- ✦ Body only-Drag Slash sold separately



TRAXXAS.COM 31



# ULTIMATE REALISM

Traxxas 4-Tec 3.0 puts supercar performance in your hands with a long-wheelbase, wide-track design. Beautiful to display—with Traxxas performance that demands you to drive.

STINGRAY



4TEC 3.0  
AWD CHASSIS



CORVETTE



'35 Hot Rod  
Truck



'33 Hot Rod  
Coupe



- Replica Hot Rod Truck and Coupe Bodies
- Low Profile Clipless Front Body Mount
- 2.1" Wheels with 2.8" Tires & Molded Disc Brakes
- Steel Driveshafts

Factory Five, Factory Five Racing, and the Circle 5 logo are registered trademarks. All images used by permission from Factory Five Licensing, Inc. All rights reserved © 2021



GR Supra GT4

- 4-Tec 3.0 AWD Chassis
- XL-5 Waterproof Electronic Speed Control
- Titan 12T 550 Motor
- Clipless Body Mounting



TOYOTA

Toyota and all associated marks, emblems and designs are intellectual property rights of Toyota Motor Corporation and used with permission.



# 100+MPH\*



## XO-1

THE **WORLD'S FASTEST**  
READY-TO-RACE® **SUPERCAR**

XO-1 combines state-of-the-art technology, cutting edge design, and a total focus on quality and precision into one vehicle that could only come from Traxxas. 0-60 in 2.3 seconds. 0-100 in 4.92 seconds. Top speed over 100mph!

- All Wheel Drive with Traxxas Stability Management (TSM)™ for Ultimate Control
- Traxxas Big Block Brushless Motor
- Castle Creations Mamba Monster Extreme Speed Control
- TQi 2.4GHz Radio System with Traxxas Link Wireless Module and Telemetry

**0-60 in 2.3 SECONDS**  
**0-100 in 4.92 SECONDS**  
**Top Speed: 100+MPH**



\* With two 3s LiPo batteries (sold separately) and included high speed gearing.

TRAXXAS.COM 33



# DESERT RACING IN PRO SCALE®



Traxxas Pro-Scale design merges scale realism with extreme 6s performance, durability, and speed. The Desert Racer elevates scale realism to a new level.

**50+\***  
**mph**

## UNLIMITED® DESERT RACER

- 50+mph\* Top Speed with Optional 3S LiPo Batteries
- Traxxas Stability Management (TSM)™
- Waterproof VXL-6s Brushless Power System
- 2200Kv Brushless Motor
- TQi 2.4GHz Radio System
- Compatible with Dual 2s, Dual 3s and a Single 4s LiPo Batteries
- 4-Link Solid Rear Axle Design
- Rugged Tube Cage



**PRO-SCALE™ PERFORMANCE**



**DRIVING REALISM**



**6S EXTREME POWER**



**POWER. STRENGTH. SPEED.**



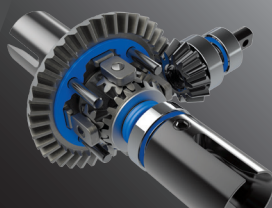
**70+<sup>\*</sup>  
mph**

The next-generation E-Revo retains all the benefits of its original ground-breaking, award-winning design, but fortifies them with brute strength and an intense, take-no-prisoners attitude to deliver what is simply the ultimate 6s monster. Get ready for a whole new level of power, strength, and speed.

# EREVO<sup>®</sup>

VXL BRUSHLESS

- 70+mph Top Speed with Optional 3s LiPo Batteries
- MAXX-Spec™ driveline
- Waterproof VXL-6s ESC
- 2200kV Brushless Motor
- TQi 2.4GHz Radio System with Self-Righting
- Compatible with dual 2s or 3s LiPo batteries



**MAXX-SPEC™ DRIVELINE**



**22+ VOLT POWER SYSTEM**



**SELF RIGHTING**

\*With optional 3s LiPo batteries and speed gearing (sold separately)

TRAXXAS.COM 35



## SLAYER PRO 4X4



# EXPERIENCE THE SOUND AND PERFORMANCE OF **NITRO POWER**

From the fun of the Nitro Rustler to the blistering speed of the Jato 3.3, Traxxas knows nitro! Fuel up and hit the throttle. Traxxas nitro off-road models include over \$50 of premium running accessories and are designed with durability and performance for reliable fun, run after run.



## JATO 3.3

- Extreme TRX 3.3 Power for 65+mph speeds
- 0-60mph in 4.2 seconds!
- TQi 2.4GHz Radio System with Traxxas Stability Management (TSM)™ and factory installed telemetry sensors



## NITRO SLASH

- TRX 3.3 Racing Engine for Tire-Melting power
- 50+mph Top Speed and Authentic Pro 2WD Handling
- TQi 2.4GHz Radio System with Traxxas Stability Management (TSM)™



## NITRO RUSTLER

- TRX 2.5 Racing Engine with EZ-Start® Powers Rustler to 50+mph Top Speed
- TQi 2.4GHz Radio System with Traxxas Stability Management (TSM)™



## REVO 3.3

- Extreme Power TRX 3.3 Engine
- OptiDrive® Reversing 2-Speed Transmission
- TQi 2.4GHz Radio System with Traxxas Stability Management (TSM)™

## T-MAXX® 3.3

- TRX 3.3 Racing Engine
- TQi 2.4GHz Radio System with Traxxas Link Wireless Module and Factory Installed Telemetry
- Over \$50 of Premium Nitro Accessories Included

## T-MAXX® CLASSIC

- TRX 2.5 Racing Engine
- EZ-Start® Electric Starting
- Two-Speed Forward and Reverse Transmission
- Over \$50 of Premium Nitro Accessories Included



# SPARTAN

**50+<sup>\*</sup> mph**

## POWER AND SPEED ON THE WATER

From relaxing fun to flat-out high performance, Traxxas has the boat for you when it's time to hit the water. The simplicity of the Blast makes it fun for everyone, while the Spartan and M41 feed the appetite of any power-hungry marine enthusiast.

**M41**  
WIDEBODY



- 40" Widebody Catamaran Hull for High-Speed Performance
- Water-Cooled, Waterproof VXL-6s Marine Speed Control
- Traxxas Stability Management (TSM)<sup>™</sup>
- 50+mph on 6S LiPo! (Batteries Sold Separately)



**BLAST**<sup>™</sup>



- Powerful Water-Cooled 540 Stinger Motor and Nautica Waterproof Speed Control
- TQ 2.4GHz 2-Channel Radio System
- Includes 6-Cell NiMH Battery with iD and DC charger

DCB and M41 Widebody are trademarks of Dave's Custom Boats, LLC used under license.

*\*With optional 3s LiPo batteries*

TRAXXAS.COM 37



# GENUINE TRAXXAS ACCESSORIES

Genuine Traxxas accessories, batteries, and chargers are guaranteed to provide factory fit and perform at the highest level. Get all the speed and power that was engineered into your Traxxas model!



## GET TRAXXAS ENGINEERED SPEED AND POWER



### 2S SINGLE BATTERY 2992

- Ideal for Rustler, Bandit, Stampede, Slash, 4-Tec 2.0, TRX-4 & more
- Includes EZ-Peak Plus Charger with Auto Battery Identification



### 3S DUAL BATTERY 2990

- Fits dual battery models including E-Revo, X-Maxx, Spartan and M41
- Get double the runtime on single battery models including Slash 4X4 VXL
- Includes EZ-Peak Dual Charger with two charging ports and Auto Battery Identification

### Also Available:

2994 3S SINGLE BATTERY LIPO & EZ PEAK PLUS CHARGER

2997 DUAL 4S LIPO & EZ-PEAK LIVE DUAL CHARGER

2991 DUAL 2S LIPO & DUAL CHARGER



### EZ-PEAK LIVE DUAL 26-AMP CHARGER 2973

- 200 Watt 26+ amp output
- Recognizes iD-equipped batteries to optimize charger settings
- MAXX Charge feature gets you back in the action quickly
- Optimized for faster LiPo balance charging

### EZ-PEAK LIVE 12-AMP CHARGER 2971







**Auto Battery  
Identification**

## RECOGNIZES TRAXXAS **iD** BATTERIES TO AUTOMATICALLY PROGRAM AND OPTIMIZE CHARGE SETTINGS

Traxxas iD batteries deliver an easier and safer LiPo charging solution when used with our exclusive iD chargers. You just plug in your iD batteries and press start. The iD charger handles all the settings and quickly gives you an optimized charge, every time.



## MAKE IT YOUR OWN WITH GUARANTEED TRAXXAS FIT AND PERFORMANCE



### ANODIZED ALUMINUM ACCESSORIES

- Add durability and style with aluminum steering blocks, caster blocks, axle carriers, and steering bellcranks in four different colors
- Find accessories for your model at [traxxas.com/accessories](http://traxxas.com/accessories)



### PADDLE TIRES


- Supreme traction in sand, snow, and even across the water
- Reinforced paddles with secondary ribs provide stable control on loose surfaces
- Available for X-Maxx, E-Revo, Stampede, Slash, Rustler & more
- For more information, visit [Traxxas.com/paddle-tires](http://Traxxas.com/paddle-tires)



### BIG BORE SHOCKS **5862**

- Superior handling and control
- Hard-anodized aluminum bodies, PTFE-coated shock bores, and titanium nitride coated shafts for smooth, durable operation
- Includes progressive rate Slash springs

Land Rover and the Land Rover Logo are trademarks owned and licensed by Jaguar Land Rover Limited.

**AMG**, „Mercedes-Benz“ and  are the intellectual property of Mercedes-Benz Group AG. They are used by Traxxas LP under license.



TRAXXAS.COM 39





AIR  
DIRT

**TRAXXAS**  
*is Ready-To-Race*



ROAD  
WATER



**TRAXXAS**  
The Fastest Name In Radio Control

© Copyright Traxxas 2023. ART-654

